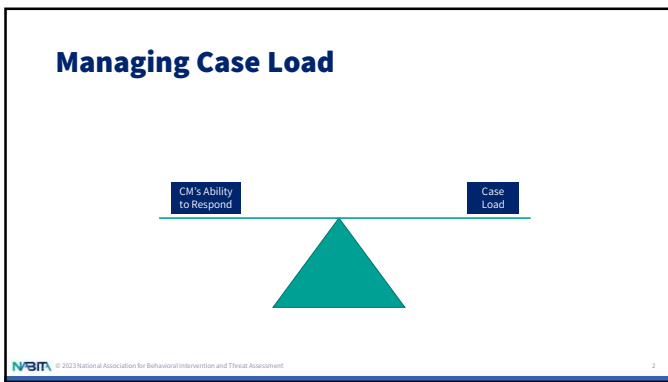
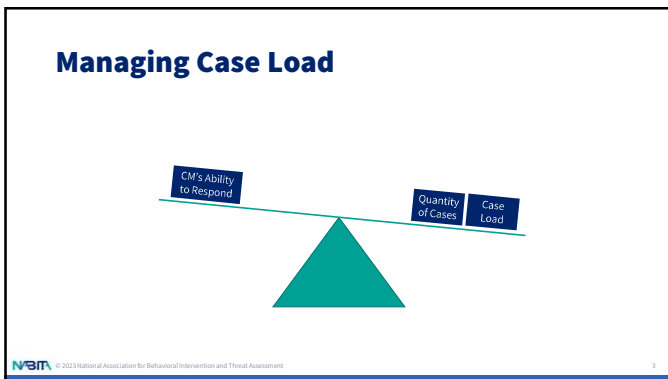




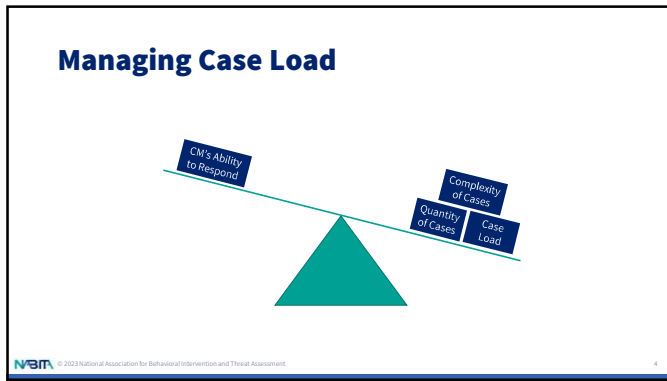
1



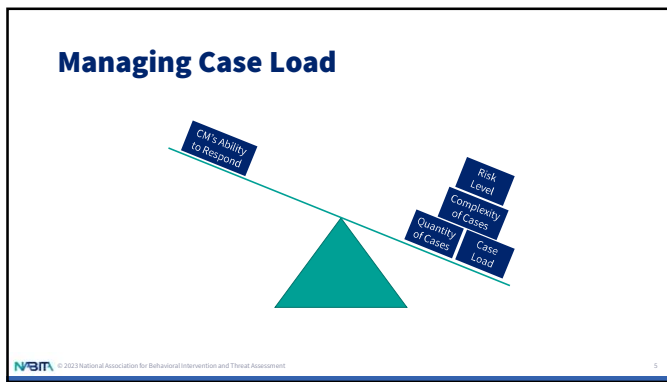
2



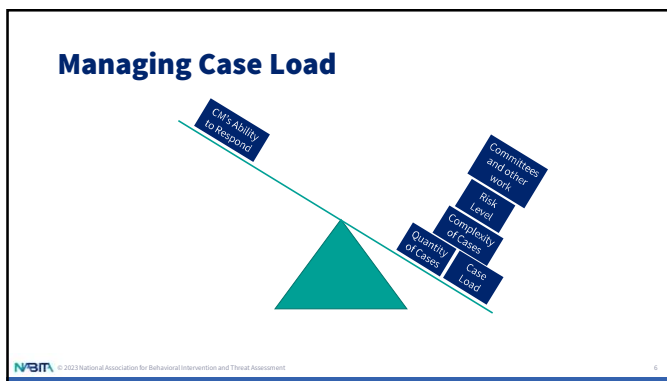
3



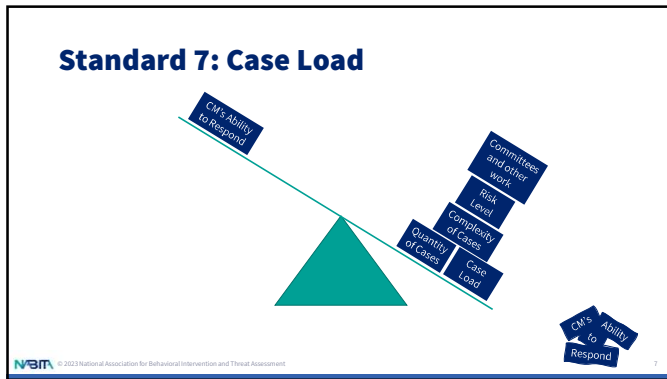
4



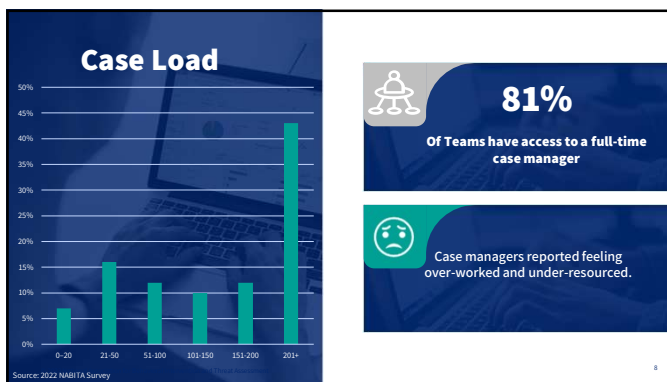
5



6



7



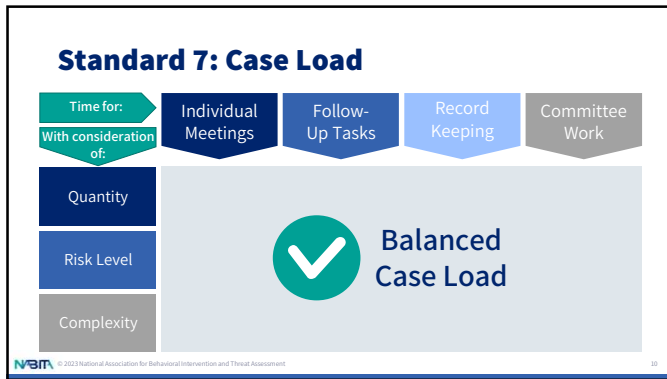
8

Standards for Case Management

© 2023 National Association for Behavioral Intervention and Threat Assessment

Case managers maintain a caseload that allows *appropriate time* for *individual meetings, follow-up tasks, documentation, committee work*, and other responsibilities with consideration given to the *quantity, risk level, and complexity* of the cases within each case manager's caseload.

9



10

Calculate the time/hours used on one case that can be pulled via Maxient

Managing High Caseloads Panel

Format:

- Introductions and talking points from your panelists
- Facilitated panel discussion
- Questions from the audience

Your Panelists:

- Makenzie Schiemann, Ph.D.
- Tim Cason, M.Ed.
- Linda Abbot, M.Ed., LMHC
- Aaron Austin, Ed.D.

NAM © 2023 National Association for Behavioral Intervention and Threat Assessment 11

11
