

UNIVERSITY OF ALABAMA IN BIRMINGHAM



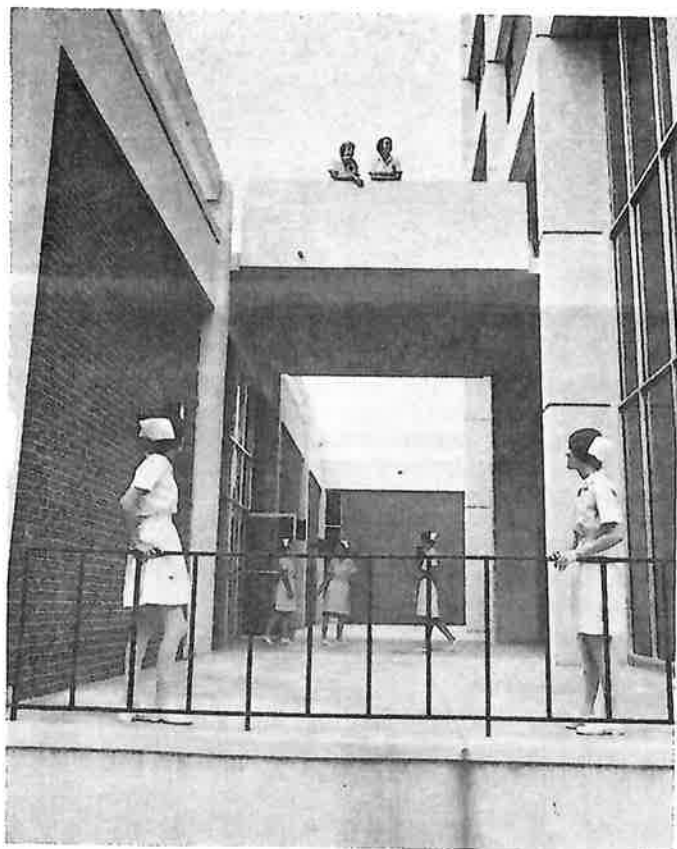
# SCHOOL OF NURSING

## ALUMNI NEWSLETTER

VOL. VI

SPRING 1972

NO. 1



### TOGETHERNESS IS GREAT!!

Dreams do come true! The first real home that the School of Nursing has had since the baccalaureate program moved from the Tuscaloosa to the UAB campus is now a reality. Last July 1st packing cases and happy voices began arriving at the 8th Avenue South location of the School of Nursing's new home. For the first few weeks confusion prevailed amidst unfinished construction and the clutter of discarded cartons, but it was the happy confusion of a family reunited at last.

The new building of the school is programmed to accommodate 700 nursing students and 70 administrative and faculty personnel. The structure consists of a five story center tower with faculty and administrative offices located on the top four floors and lobby, snack and lounge areas provided on the ground floor. Surrounding this is a rectangular office containing classrooms, learning resource areas and auditorium. This space includes a large 202 seat teaching auditorium, four classrooms with capacities of 60 students each, six seminar rooms for 20-25 people, an assembly area for 70 and three small conference rooms. In addition, there is a fully equipped fundamentals laboratory with 12 patient beds.

The school's Learning Resources Center, which is yet to be completely equipped, will have multi-media teaching materials and equipment available for undergraduate as well as graduate programs.

Funds for construction of the facility were provided for by a grant awarded the School of Nursing by the Public Health Service, under provision of the Nurses Training Act of 1964. University matching funds made up the remainder of the two million dollar cost of the structure.

Enrollment of UAB School of Nursing undergraduate program has increased 125% since 1966. Undergraduate enrollment for the fall is expected to be 650 students.

Forty-two graduate students are presently enrolled in the graduate program with an expected 55 for the fall.

A state-wide program of continuing education was begun in 1969. More than 3,000 nurses and nursing administrators have received training in this program. The courses are taken to outlying towns and rural areas when possible to make them convenient for the participants and reduce time lost from jobs. For the immediate Birmingham and satellite areas courses are taught in the school which has proven to be an indispensable facility.

### BACCALAUREATE PROGRAM

There have been no major changes in this program during the past year, but enrollment has increased from a total of 466 students for the fall of 1970-71 to a total of 586 students for the fall of 1971-72.